

Abbreviations used in ChemInform:

Groups, protective groups:

Cy:	cyclohexyl
Dmt:	4,4'-dimethoxytrityl
EE:	1-ethoxyethyl
Mem:	-CH ₂ -O-CH ₂ -CH ₂ -O-Me
Mom:	-CH ₂ -O-Me
Mst:	2,4,6-trimethylphenyl
Piv:	-CO-tBu
Pmb:	p-methoxybenzyl
Sem:	-CH ₂ -O-CH ₂ -CH ₂ -SiMe ₃
Tbs:	-SiMe ₂ -tBu
Tes:	-SiEt ₃
Tips:	-Si(iPr) ₃
Tms:	-SiMe ₃
Tol:	4-methylphenyl

In complex compounds:

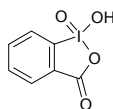
acac:	acetylacetonate
allyl:	allyl-ligand
bipy:	2,2'-bipyridine
cod:	1,5-cyclooctadiene
Cp:	cyclopentadienyl
cyclam:	1,4,8,11-tetraazacyclotetradecane
dba:	(E,E)-dibenzylideneacetone
dppb:	1,4-bis(diphenylphosphino)butane
dppe:	1,2-bis(diphenylphosphino)ethane
dppf:	1,1'-bis(diphenylphosphino)ferrocene
dppm:	1,1-bis(diphenylphosphino)methane
dppp:	1,3-bis(diphenylphosphino)propane
en:	1,2-ethanediamine
fod:	7,7-dimethyl-1,1,1,2,2,3,3-heptafluoro-4,6-octanedionate
hfc:	3-(heptafluoropropyl-hydroxymethylene)-d(or l)-camphorato
methallyl:	2-methylallyl-ligand
nbd:	norbornadiene
phen:	1,10-phenanthroline
salen:	N,N'-bis(salicylidene)ethanediamine
terpy:	terpyridine

Catalysts, reagents, solvents...:

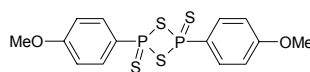
AIBN:	2,2'-azobisisobutyronitrile
BBN (9-BBN):	9-borabicyclo[3.3.1]nonane
BINAP:	2,2'-bis(diphenylphosphino)-1,1'-binaphthyl
BINOL:	2,2'-dihydroxy-1,1'-binaphthyl (in complexes also alcoholate forms)
[bmim]:	1-butyl-3-methylimidazolium (cation)
BSA:	N,O-bis(trimethylsilyl)acetamide
CAN:	cerium(IV) ammonium nitrate
CDI:	N,N'-carbonyldiimidazole
CSA:	camphorsulfonic acid
DABCO:	1,4-diazabicyclo[2.2.2]octane
DBN:	1,5-diazabicyclo[4.3.0]non-5-ene
DBU:	1,8-diazabicyclo[5.4.0]undec-7-ene
DCC:	dicyclohexylcarbodiimide
DCE:	1,2-dichloroethane
DDQ:	2,3-dichloro-5,6-dicyano-1,4-benzoquinone
DEAD:	diethyl azodicarboxylate

(DHQ)2-PHAL:	1,4-bis(dihydroquininyl)phthalazine
(DHQD)2-PHAL:	1,4-bis(dihydroquinidinyl)phthalazine
DIAD:	diisopropyl azodicarboxylate
DIC:	diisopropylcarbodiimide
DIOP:	4,5-bis(CH ₂ -PPh ₂)-2,2-dimethyl-1,3-dioxolane
DMA:	dimethylacetamide
DMAD	dimethyl acetylenedicarboxylate
DMAP:	4-dimethylaminopyridine
DMDO:	dimethyldioxirane
DME:	dimethoxyethane
DMF:	dimethylformamide
DMPU:	N,N'-dimethylpropyleneurea
DMSO:	dimethyl sulfoxide
EDC:	N'-(3-dimethylaminopropyl)-N-ethylcarbodiimide
EDTA:	ethylenediaminetetraacetic acid
[emim]:	1-ethyl-3-methylimidazolium (cation)
[hmim]:	1-hexyl-3-methylimidazolium (cation)
HMPA:	hexamethylphosphoramide
HOBt:	1-hydroxybenzotriazole

IBX:



Lawesson reagent:



LDA:	lithium diisopropylamide
MCPBA:	m-chloroperbenzoic acid
NBS:	N-bromosuccinimide
NCS:	N-chlorosuccinimide
NIS:	N-iodosuccinimide
NMM:	N-methylmorpholine
NMO:	N-methylmorpholine N-oxide
NMP:	N-methyl-2-pyrrolidinone
PCC:	pyridinium chlorochromate
PDC:	pyridinium dichromate
PMHS:	polymethylhydrosiloxane
PPA:	polyphosphoric acid
p-tolBINAP:	2,2'-bis(di(p-tolyl)phosphino)-1,1'-binaphthyl
Py:	pyridine
PyBOP:	O-(tripyrrolidinophosphonium)-HOBt PF ₆ ⁻
Red-Al:	sodium bis(2-methoxyethoxy)aluminum hydride
TADDOL:	tetraaryl(=phenyl)-1,3-dioxolane-4,5-dimethanol (in complexes also alcoholate forms)
TEMPO:	2,2,6,6-tetramethylpiperidine N-oxyl
TFA:	trifluoroacetic acid
TFAA:	trifluoroacetic acid anhydride
THF:	tetrahydrofuran
TMEDA:	tetramethylethylenediamine

Miscellaneous:

cv.:	conversion
d.e.:	diastereomeric excess
ds.:	diastereoselectivity

e.e.:	enantiomeric excess
f.v.p.:	flash vacuum pyrolysis
m.d.:	mixture of diastereomers
m.i.:	mixture of isomers

Lowercase characters are used if an abbreviation relates to an organometallic ligand (e.g. "thf", "py", "diop").
An asterisk following a roman numeral denotes absolute configuration.